



## HASSLE-FREE MEETINGS!

### HOTEL INFORMATION

- Number of rooms: 215  
 Comfort double rooms: 176  
 Superior double rooms: 25  
 Junior suites: 7  
 Suites: 2  
 Apartments: 2  
 Theme rooms: 3
- Number of floors: 7

### EQUIPMENT

- Air conditioning, flatscreen TV, mini bar, notebook-sized room safe
- 2 Business apartments
- 1 Boardroom equipped with the latest in technology
- Wi-Fi internet access throughout the hotel
- Public car park beside the hotel
- Modern wellness & fitness room
- WIENER BISTRO
- BAR *WIENER CAFÉ*
- Exhibition centre reachable per foot
- Underground station outside the hotel (U3 St. Pauli)

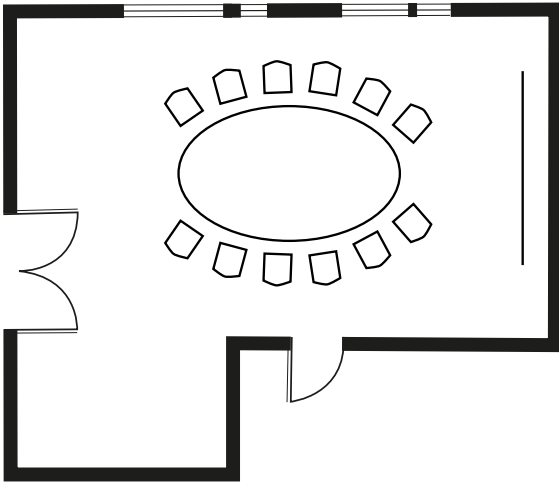
### EQUIPMENT BOARDROOM

- 1 Projector | Multimedia equipment
- 1 Projection screen
- 1 Pin board
- 1 Flip chart with pad
- 1 Notepad plus pencil per person
- 1 Presenter's kit

### EQUIPMENT BUSINESS SUITES

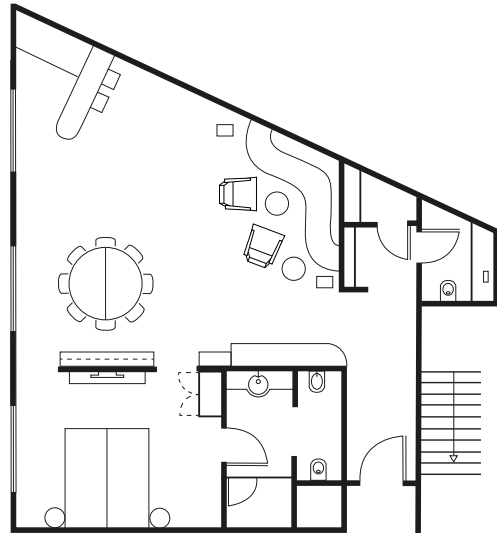
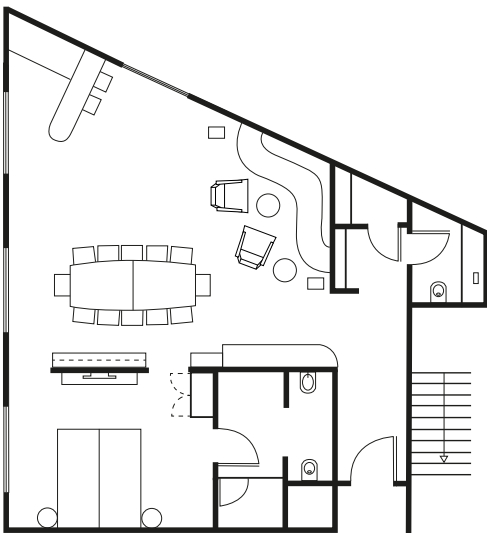
- Meeting table for up to 8 persons
- Flatscreen TV (compatible with notebook PC)
- Wi-Fi internet access
- DVD/CD player
- Couch
- Bar area with mini bar
- Espresso machine

## BOARDROOM



For further information, please see "Business & Conferences" on our website.  
[www.arcotelhotels.com](http://www.arcotelhotels.com)

## BUSINESS APARTEMENTS



## HOW TO GET TO US



### ARRIVAL BY CAR

From the north-west: On the A7 heading south take the 26 HH Stellingen exit and merge with Kieler Straße B4/B5. This then becomes Holstenstraße. After 6.2 km turn left onto the Reeperbahn and then turn right after 950 m onto Zirkusweg. You will find the entrance to the "Tanzende Türme" public underground car park beside the hotel on the right-hand side.

### ARRIVAL BY TRAIN

From the main railway station: Take the U3 underground towards Schlump-Barmbek until the St. Pauli station. This trip takes around 9 minutes. From the station it is only a few minutes' walk to the ARCOTEL Onyx Hamburg.  
From the airport: Take the S1 suburban railway towards Ohlsdorf and travel 5 minutes to Ohlsdorf station. Switch there to the U1 line towards Ohlstedt, and travel to Kellinghusenstraße. Then change to the U3 line towards Hauptbahnhof Süd. After a total journey time of 27 minutes you will reach the St. Pauli station, which is directly beside the hotel.